

LEDPanel

english version 1.0

wivactive
TECHNOLOGY

VIMALUX



wivactive
TECHNOLOGY

LIGHT that SANITIZE the AIR

Wivactive is an **innovative technology** developed by Witek for **air purification** through the use of **light and nanomaterials**.

The result of many years of experience of the company operating in the lighting sector and in collaboration with major internationally accredited research centers, **wivactive** technology offers **an intelligent and effective solution to the problem of pollution and unhealthy air** in closed environments.

Wivactive products are completely **Made in Italy: designed and developed by Witek Tech Lab** and manufactured at the company's dedicated production facilities.



AIRPanel

Lighting device with **wivactive technology** for air sanitization using a photocatalytic system with calibrated light on the visible. Available with GearBox filters, in 2 or 4 element configuration, for internal panel photocatalysis. The illuminating surface coated with doped titanium dioxide has the function of carrying out an external photocatalysis.



HGPanel

Lighting device with **wivactive technology** for air sanitization using a photocatalytic system with calibrated light on the visible. The illuminating surface coated with doped titanium dioxide has the function of carrying out an external photocatalysis.

PROBLEM

Indoor pollution

At home and in the office we are surrounded by elements that are invisible, let them enter our body simply breathing, without realizing it. Outdoor and indoor air pollution is considered by the World Health Organization as the main environmental risk factor of population's health.

90%

Time of day that we spend indoors

500%

Indoor pollution is 5 times higher than the external one

90%

The amount of PM10 compared to all the particles in the air

8

Air amount that we breath in a minute

350

Millions of particles ingested every minute

25

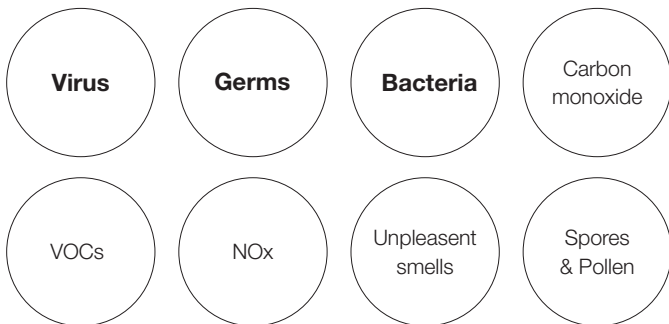
Millions of particles ingested with each breath

SOLUTION

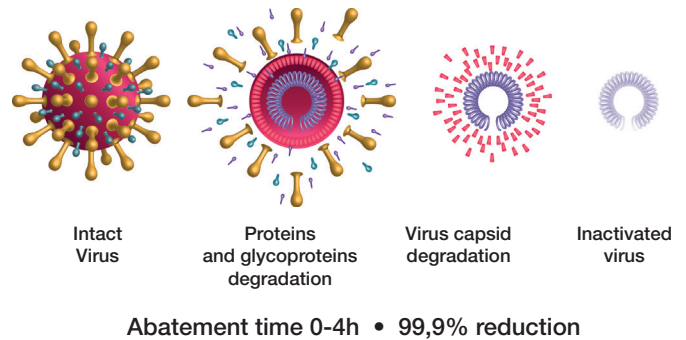
Photocatalysis with visible light

Photocatalysis is a sanitizing process activated by the combination of visible LED light and doped titanium dioxide. **Wivactive** system uses this new technology (Witek patent) to sanitize the air from viruses, bacteria and harmful substances.

SUBSTANCES ELIMINATED BY WIVACTIVE SYSTEM



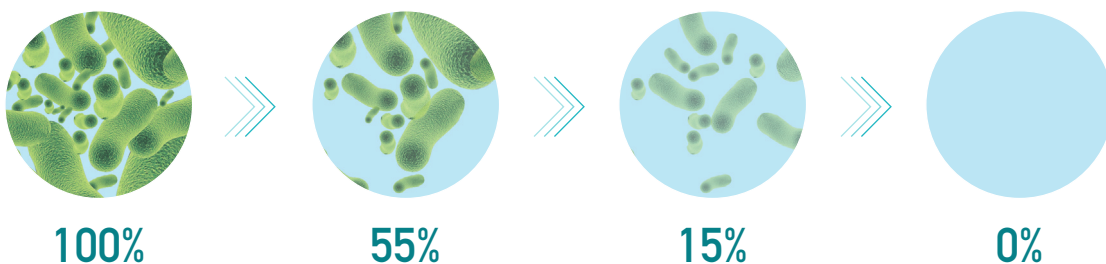
EXAMPLE OF CORONAVIRUS ABATEMENT



ACTION h24

Sanitizing process in a continuous way

Wivactive system, filtering the air 24 hours a day, ensures antimicrobial and antiviral action, for a healthy environment.



Ceramic filter

The ceramic filter, coated with doped titanium dioxide and illuminated by a LED source with a spectrum calibrated on the visible, activates the sanitizing process of photocatalysis. Morphology of his cells widens its intervention surface, making it extremely efficient.

DOPED TITANIUM DIOXIDE COATING

HIGH POROSITY CERAMIC FILTER

Simple and economical maintenance



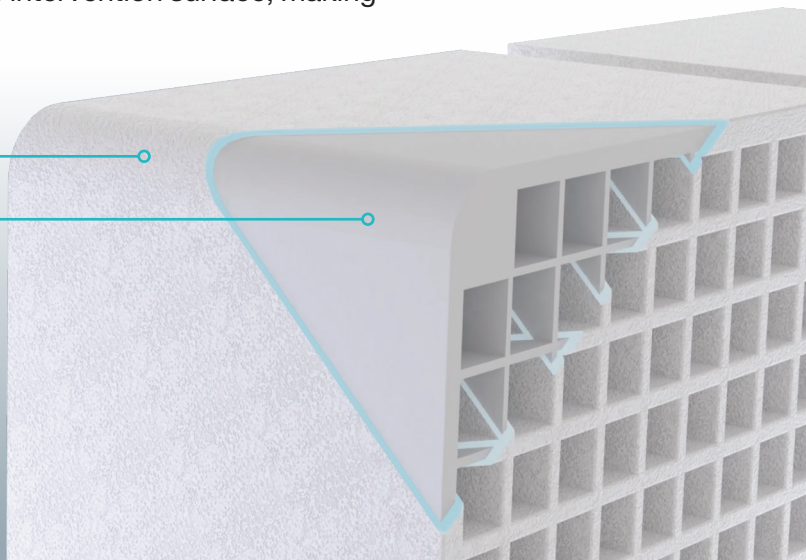
Sanitizing effect guaranteed over time



Easy cleaning with water



No replacement needed 100% regeneration



HEART OF THE SYSTEM ———

GearBox_{Filter}

The GearBox is the element in which the photocatalytic sanitizing process is activated. Consists of a G4 inlet filter, 3 ceramic filters with doped titanium dioxide, a calibrated visible light LED source and an extremely quiet fan that guarantees an efficient air circulation.

1° Filtering stage

G4 filter. The quality of this filter allows stopping of larger particles, it comes down to 100% PM10 and up to 40% PM2.5.

2°/3°/4° Filtering stage

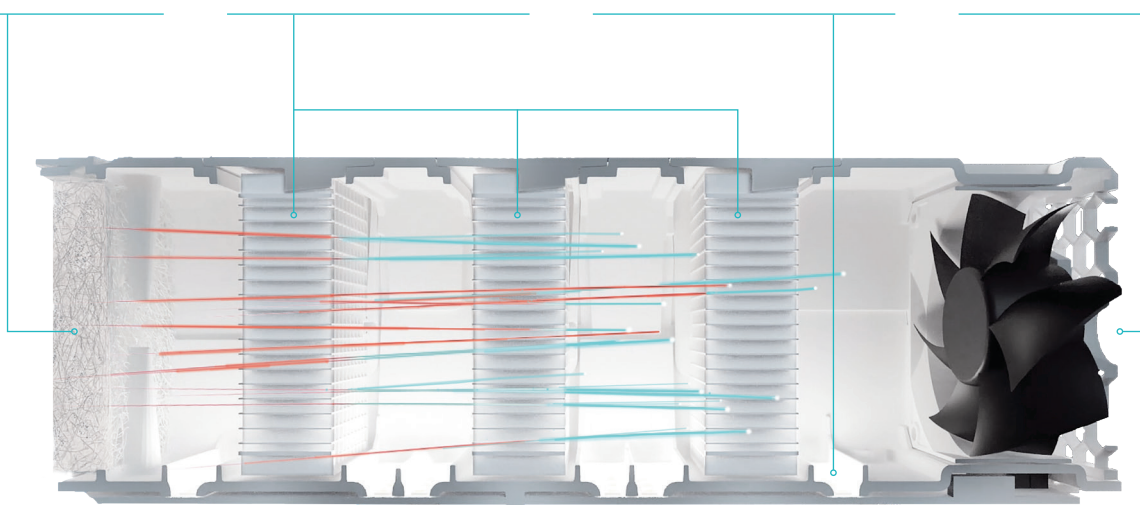
The three ceramic filters coated with doped titanium dioxide activated by an exclusive optic scheme allows a massive reduction of harmful substances.

LED Source

The LED source installed on board is calibrated in the visible light spectrum which allows the photocatalytic activation of the filter, ensuring to the parts the correct lighting and energy supply.

Suction

Forced suction ventilation through the use of a magnetic levitation fan that ensures the right air circulation in the environment with very low noise.



CERTIFICATIONS ———

Wivactive technology has obtained certifications issued by the most important Italian and European laboratories for the abatement of **Virus** (SARS-CoV, SARS-CoV-2), **Bacteria** like Escherichia Coli, **NOx** (nitrogen oxides) e **COV** (Volatile organic compounds) as Formaldehyde.

AIRPanel

LIGHTING

36 W

3000 K	3800 lm	CRI90+
4000 K	105 lm/W	

PANEL

GearBox Filter

Housed into the LED panel chassis, carry out a process of **internal photocatalysis** by sanitizing the sucked air.

X2 GearBox

24W
44 m3/h
13dBA

X4 GearBox

48W
88 m3/h
19dBA

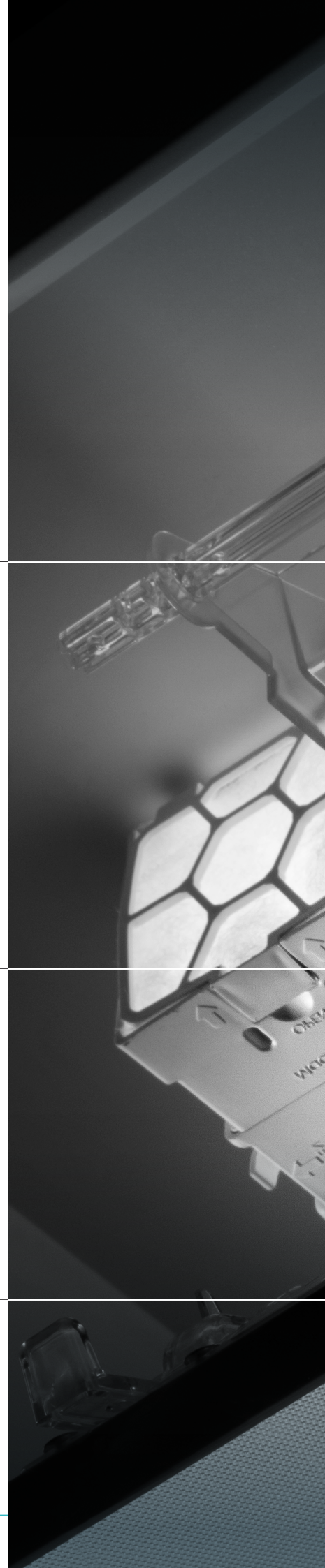
Coated with

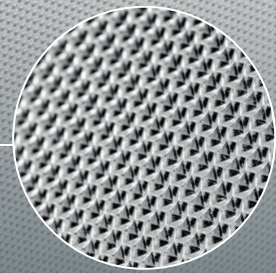
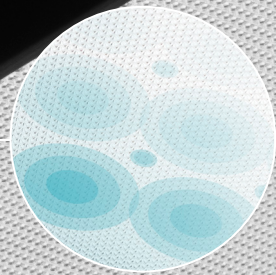
Doped titanium dioxide

The luminous screen is coated with doped titanium dioxide which, through the LED light emitted, carries out an **external photocatalysis process**, sanitizing the air that comes in contact with panel surface.

Microprismatic screen (UGR19)

The microprismatic surface in PMMA directs the light into the workplace, **ensuring the absence of glare** (UGR19)





AIRPanel

Lighting device with **wivactive** technology for air sanitization using a photocatalytic system with calibrated light on the visible. Available with GearBox filters, in 2 or 4 element configuration, for internal panel photocatalysis. The illuminating surface coated with doped titanium dioxide has the function of carrying out an external photocatalysis.



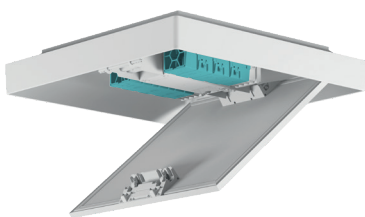
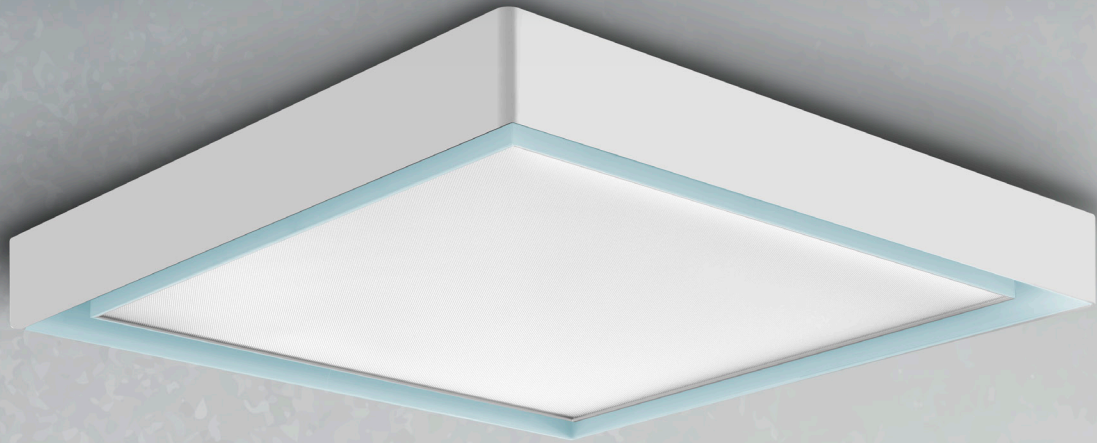
Recessed



Ceiling

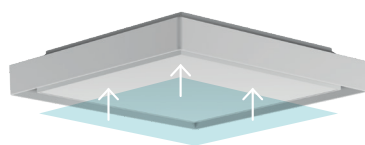


Suspension



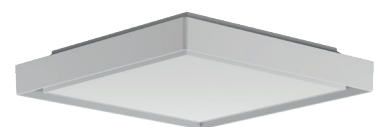
AIRPanel
x2 / x4 GearBox

Internal sanitizing



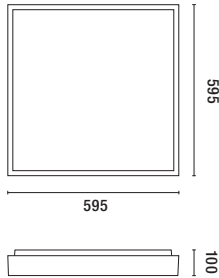
AIRPanel
Coating

External sanitizing



AIRPanel

AIRPanel



AIRPanel x2 GearBox

						LED Panel		
						ON/OFF	DALI	
36W	3000K	CRI 90+	86°	3800 lm	<input type="checkbox"/>	41600056	<input type="checkbox"/>	41600056D
36W	4000K	CRI 90+	86°	3800 lm	<input type="checkbox"/>	41600057	<input type="checkbox"/>	41600057D

				GearBox		
				N° GearBox	Flusso d'aria	Rumore acustico
24W				2	44 m3/h	13dBA

AIRPanel x4 GearBox

						LED Panel		
						ON/OFF	DALI	
36W	3000K	CRI 90+	86°	3800 lm	<input type="checkbox"/>	41600058	<input type="checkbox"/>	41600058D
36W	4000K	CRI 90+	86°	3800 lm	<input type="checkbox"/>	41600059	<input type="checkbox"/>	41600059D

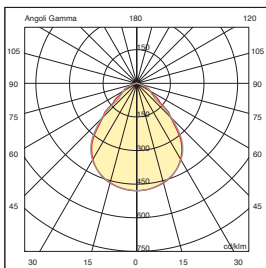
				GearBox		
				N° GearBox	Flusso d'aria	Rumore acustico
48W				4	88 m3/h	19dBA

AIRPanel Coating

						LED Panel		
						ON/OFF	DALI	
36W	3000K	CRI 90+	86°	3800 lm	<input type="checkbox"/>	41600060	<input type="checkbox"/>	41600060D
36W	4000K	CRI 90+	86°	3800 lm	<input type="checkbox"/>	41600061	<input type="checkbox"/>	41600061D

AIRPanel

						LED Panel		
						ON/OFF	DALI	
36W	3000K	CRI 90+	86°	3800 lm	<input type="checkbox"/>	41600062	<input type="checkbox"/>	41600062D
36W	4000K	CRI 90+	86°	3800 lm	<input type="checkbox"/>	41600063	<input type="checkbox"/>	41600063D



Type: LED panel for recessed, ceiling and suspension installation. Device with wivactive technology for air purification through visible photocatalytic system - Device suitable for work environments with UGR values <19 through microprismatic screen. Can be installed on the ceiling and recessed directly or via suspension kit - Available in version with GearBox Active filters in 2 or 4 element configuration, only Active coating or without Active functionality - Body: structure in UL94-HB certified ABS plastic polymer, RAL9016 white color - System "user friendly" opening-closing mechanism without the use of tools for opening, routine maintenance and cleaning of both the panel and the individual gearboxes - LED: SMD LED with high efficiency and high color rendering - Screen: Microprismatic screen and LGP in PMMA plastic polymer - Power supply: high efficiency supplied with specific internal driver - Dimmable: available in DALI version including the ON/OFF management possibility for air filtration system. Wiring: GearBox version equipped with double quick connector for separate management of the two power supplies: screen and GearBox.

ACCESSORIES

REPLACEMENT FILTERS		OPTIONAL MOUNTING KIT	
G4 Filter	41900299	Safe cable	41900148
ACTIVE Filter (1pz.)	41900300	Trimless kit 600x600	41900178
		Suspension mounting KIT (1.5 m) 4 cables	41900298

HGPanel

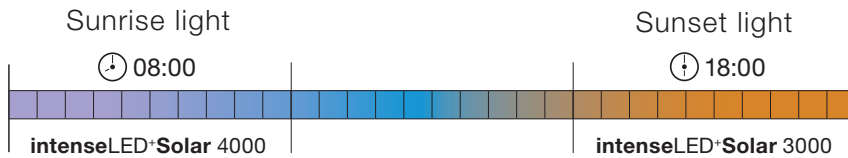
LIGHTING

32 W

3000 K	3800 lm	CRI90+	IP54
4000 K	119 lm/W	CRI99+	

intenseLED+Solar

Technology focused on the physiological and psychological well-being of man that **simulates sunlight and eliminates BLUE light**, notoriously harmful to the human eye, from LED source's light spectrum.



PANEL

Backlight

Backlighting technology with PMMA lenses, **more homogeneous light** and a longer duration over time.

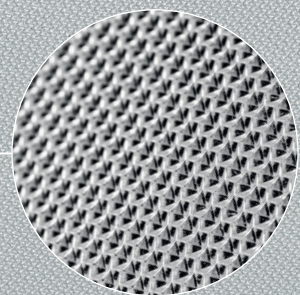
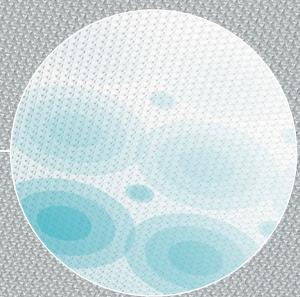
Coated with

Doped titanium dioxide

The luminous screen is coated with doped titanium dioxide which, through the LED light emitted, carries out an **external photocatalysis process**, sanitizing the air that comes in contact with panel surface.

Microprismatic screen (UGR19)

The microprismatic surface in PMMA directs the light into the workplace, **ensuring the absence of glare** (UGR19)



HGPanel

Lighting device with **wivactive** technology for air sanitization using a photocatalytic system with calibrated light on the visible. The illuminating surface coated with doped titanium dioxide has the function of carrying out an external photocatalysis.



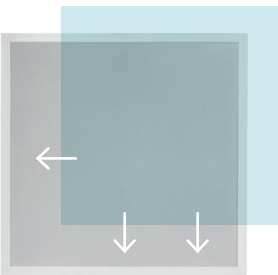
Recessed



Ceiling

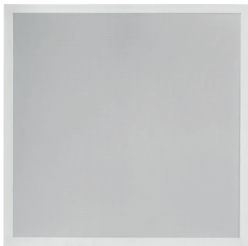


Suspension

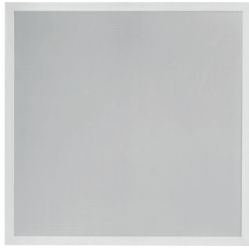


HGPanel
Coating

External sanitizing

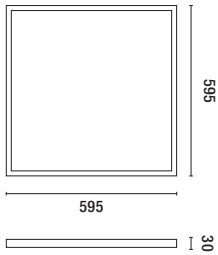


HGPanel



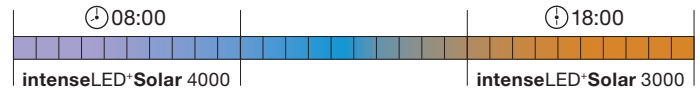
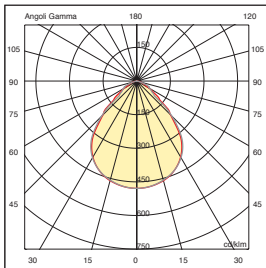
HGPanel Coating

32W	3000K	CRI 90+	86°	3800 lm	<input type="checkbox"/> 41600064
32W	4000K	CRI 90+	86°	3800 lm	<input type="checkbox"/> 41600065
32W	intenseLED+Solar 3000	CRI 99+	86°	3000 lm	<input type="checkbox"/> 41600066
32W	intenseLED+Solar 4000	CRI 99+	86°	3000 lm	<input type="checkbox"/> 41600067



HGPanel

32W	3000K	CRI 90+	86°	3800 lm	<input type="checkbox"/> 41600068
32W	4000K	CRI 90+	86°	3800 lm	<input type="checkbox"/> 41600069
32W	intenseLED+Solar 3000	CRI 99+	86°	3000 lm	<input type="checkbox"/> 41600070
32W	intenseLED+Solar 4000	CRI 99+	86°	3000 lm	<input type="checkbox"/> 41600071



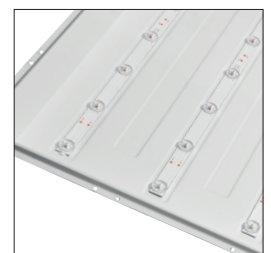
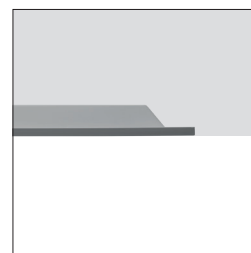
Type: LED backlight panel for recessed, ceiling and suspension installation - Device with wivactive technology for air purification through visible photocatalytic system - Device suitable for working environments with UGR <19 values via microprismatic screen - Available in Active version coating or without Active functionality - Body: white aluminum frame - LED: SMD LED with high efficiency and high color rendering. Available with intenseLED Solar technology - Screen: Microprismatic screen and PMMA plastic diffuser - Power supply: high efficiency supplied with specific driver to be ordered separately - Dimmable: 0/10V, 1/10V, PUSH, DALI available with specific driver to be ordered separately. Wiring: GearBox version equipped with quick connector for an easy installation.

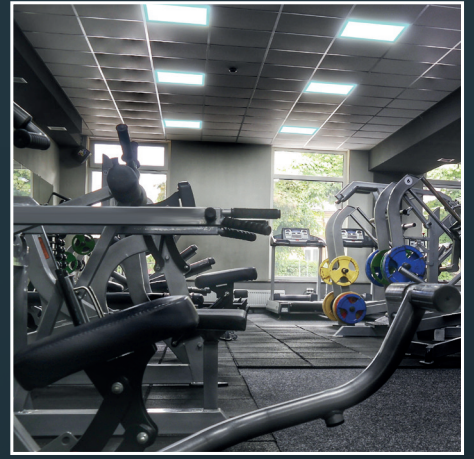
DRIVERS

	ON/OFF	DALI/PUSH/1-10V	SMART
32W	900mA 36V	61100036	61102006

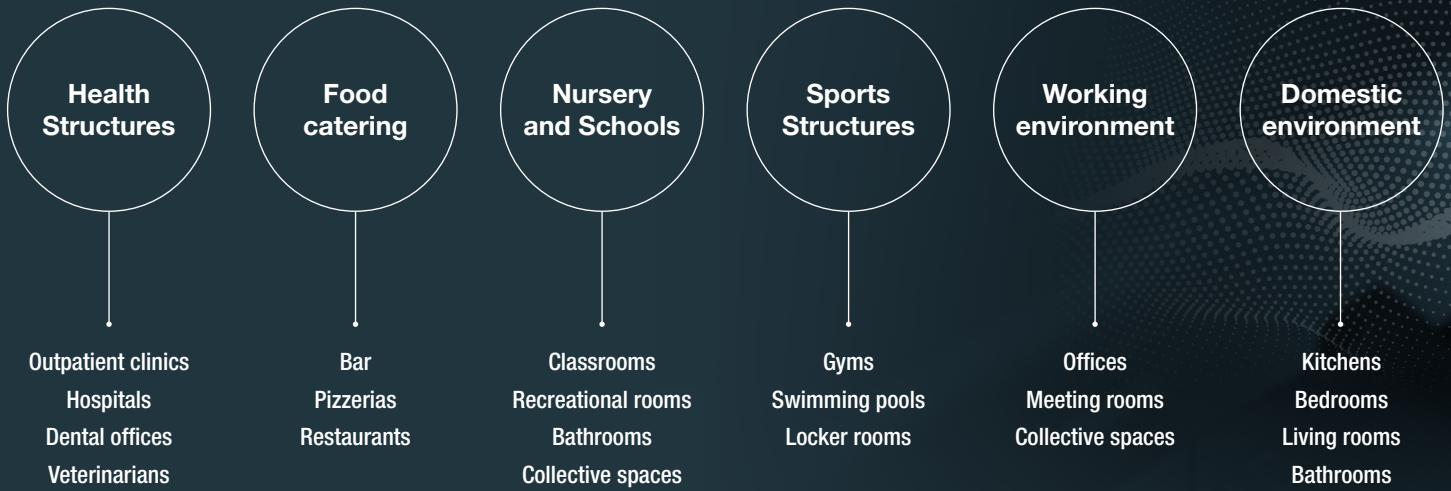
ACCESSORIES

	OPTIONAL MOUNTING KIT
Safe cable	41900148
Trimless kit 600x600	41900178
Ceiling mounting kit 600x600	41900301
Suspension mounting KIT (1.5 m) 4 cables	41900302





Installation suggestions



STRENGTHS



100% ANTIBACTERIAL

Thanks to the patented treatment based on doped titanium dioxide, **wivactive** products are 100% antibacterial and safe for public use.



TESTED ON SARS COV

Tests carried out by accredited laboratories have resulted in the certifications on which the effectiveness of **wivactive** products is based.



EASY INSTALLATION

The **wivactive** products feature ease of assembly, both those with lighting characteristics and the stand-alone ones.



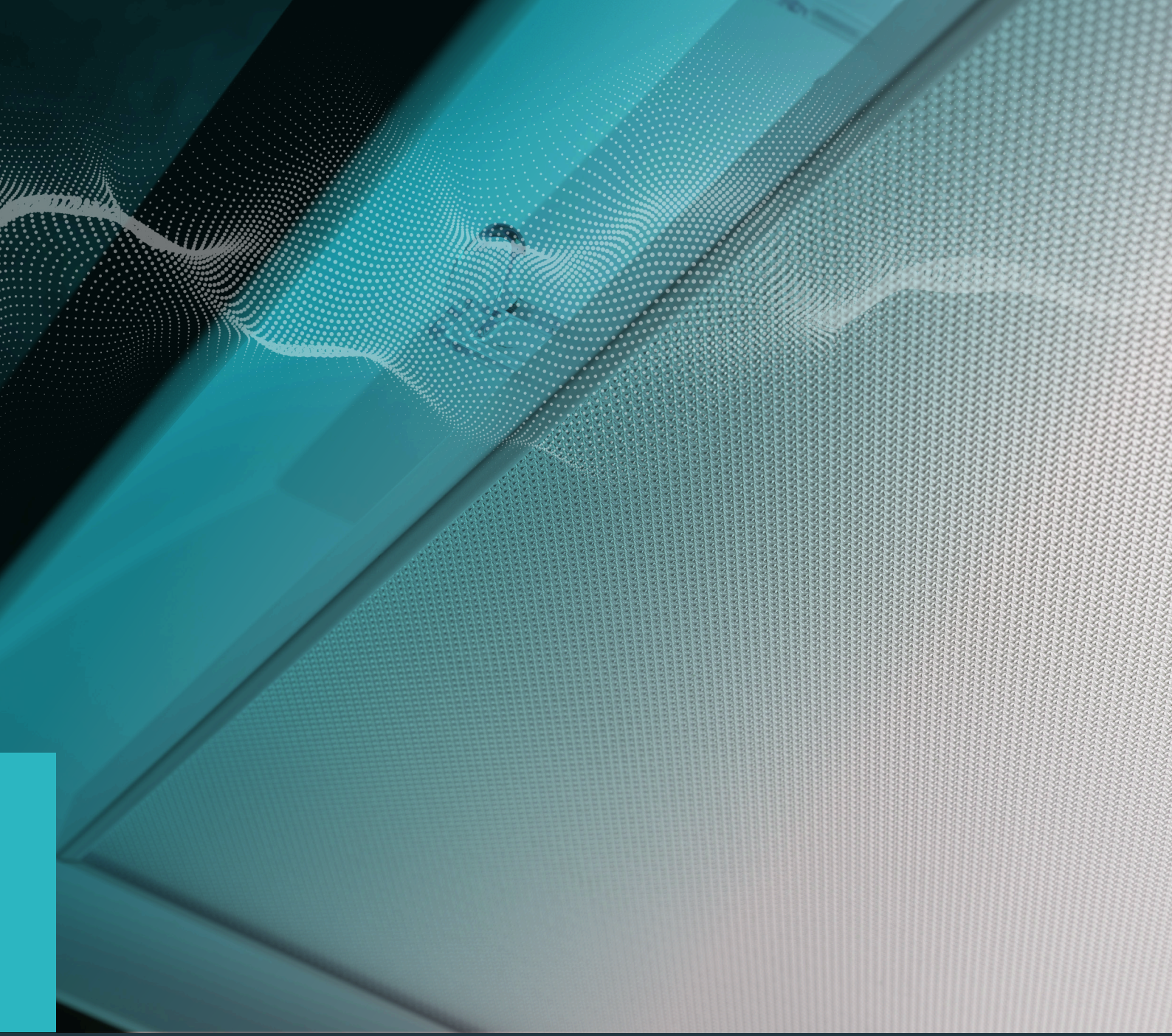
CUSTOM & PROJECT

The **wivactive** products, due to their design nature, can be customized to fully integrate them into any type of installation.



EASY TO CLEAN

The **wivactive** products are characterized by the ease and simplicity of maintenance that can be carried out independently.



VIMALUX

WITEK s.r.l.
Via Siena, 47/37 int.29 - 50142 Firenze (Italia)
www.witekgroup.com -
info@witekgroup.com

TKF3
Viale Mazzini 50, 50142 Firenze (Italia)
marco@vimalux.com
davide@vimalux.com

VIMALUX
Højdsøvej 20- 4000 Roskilde (Denmark)
www.vimalux.com
admin@vimalux.com