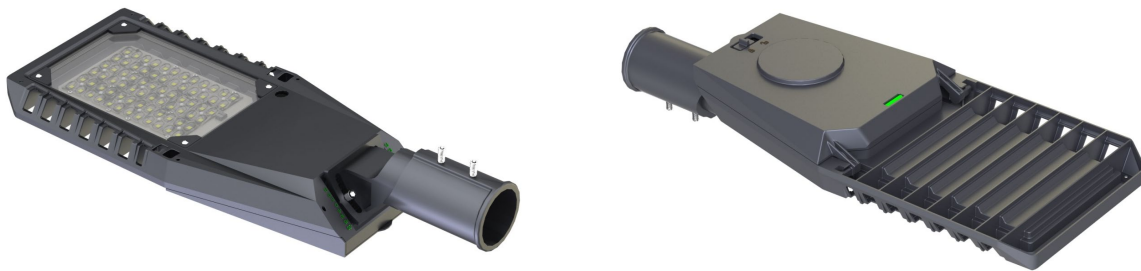




# Tuna



Standard Color: Dark Gray (PANTON:8403C)

## Features:

- Rated Power Range: 20W-200W;
- Rated Input Voltage: AC220-240V/100-240V/100-277V;
- Housing Material: Die-casting aluminum alloy + Ultra transparent tempered glass;
- Cover opening: Standard and Tool-free range are optional;
- Protection Degree: IP66, IK08;
- Angle Adjuster: 15 ° to - 20 ° angle adjustment for horizontal and vertical installation (5 ° minimum angle adjustment);
- Equipped with bubble level to ensure quick installation;
- NEMA interface and ZHAGA interface are optional;
- Control mode: Power line communication (NEMA), NB-IoT(NEMA), ZigBee (NEMA), power timer dimming, NEMA light switch;
- Pole Diameter:  $\Phi 60(\Phi 76\text{mm})$ ; below 80W,  $\Phi 42\text{mm}$ ,  $\Phi 50\text{mm}$  are optional );
- Operating environment: Operating Temperature - 40°C ~ 45°C, Operating Humidity 10% ~ 90 %RH, Storage Temperature - 40 °C ~ 55 °C.

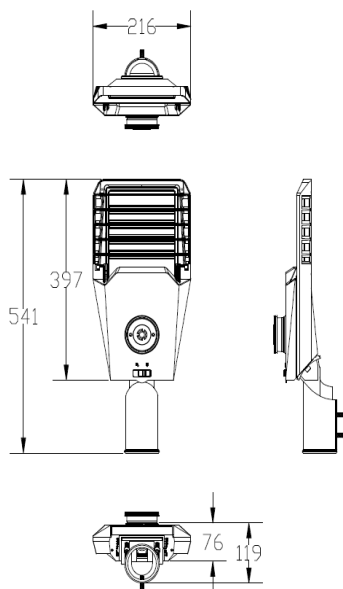
## Product Parameters:

Product Model	Power (W)	LED	CCT (K)	Luminaire Efficiency (lm/W)	PF	Ra	Life Span (Hrs)	Luminaire Dimension (mm)	Net/Gross Weight (kg)	Packing Dimension (mm)
UNI-STB9-1	40	Osram/ Lumileds	3000±30 OK 4000±30 OK 5000±30 OK 5700±50 OK 6500±50 OK	Option:130,150	≥0.92	70	50,000	516×216×119	3.5/4.5	540×315×205
UNI-STB9-2	75			Option:130,150	≥0.95			610×237×119	4.0/5.0	540×345×205
UNI-STB9-3	120			Option:130,150	≥0.95			637×269×124	6.0/7.5	565×345×215
UNI-STB9-4	150			Option:130,150	≥0.95			706×279×124	6.5/8.0	645×360×215
UNI-STB9-5	200			Option:130,150	≥0.95			706×279×127	7.5/9.5	675×415×215

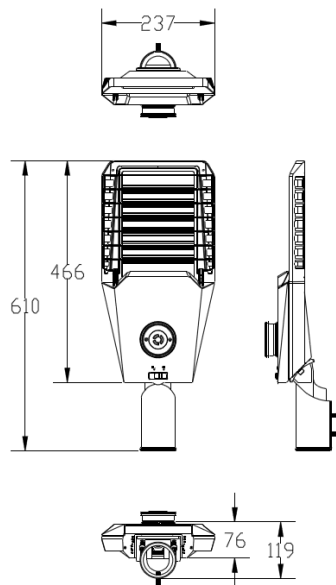
Note: The tolerance of Luminous Flux for lighting products is ±7%

## Product Dimension:

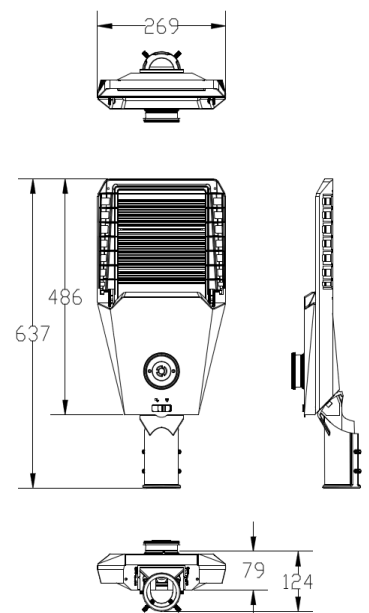
UNI-STB9-1

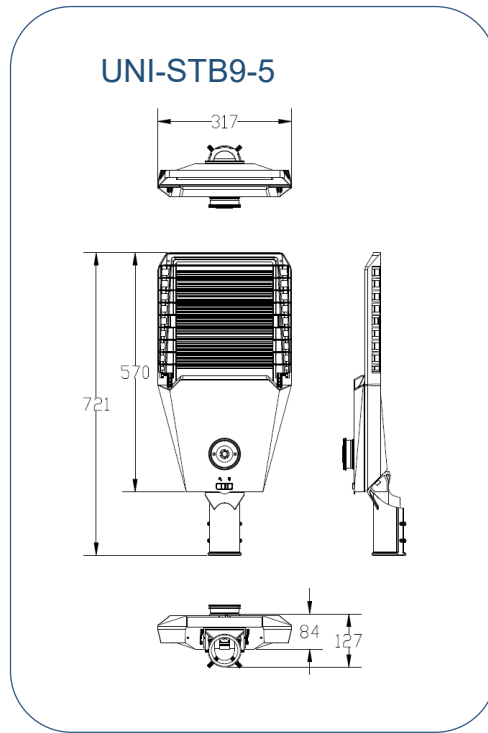
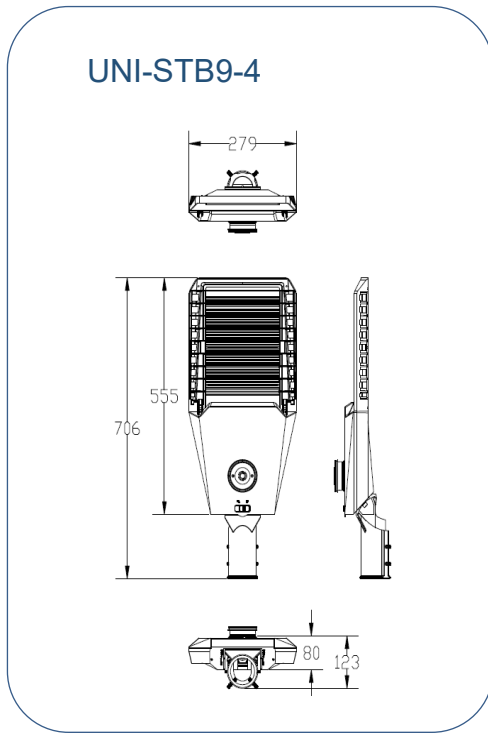


UNI-STB9-2

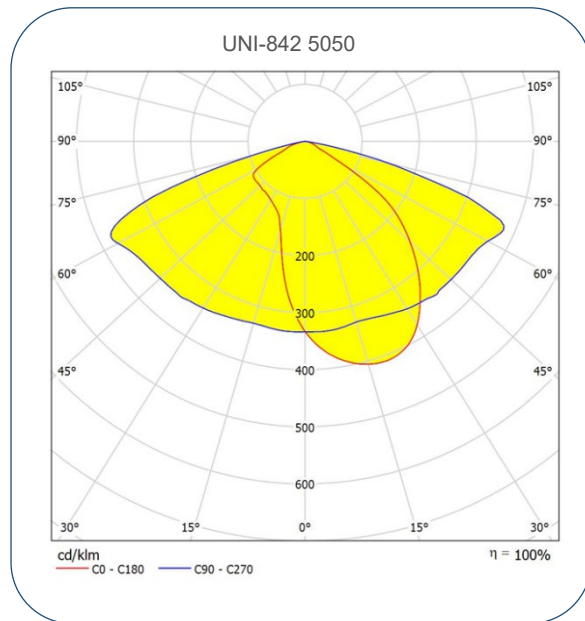
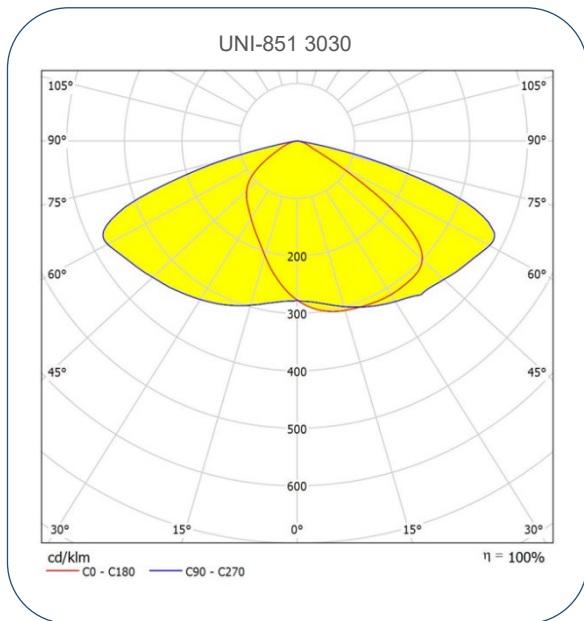


UNI-STB9-3





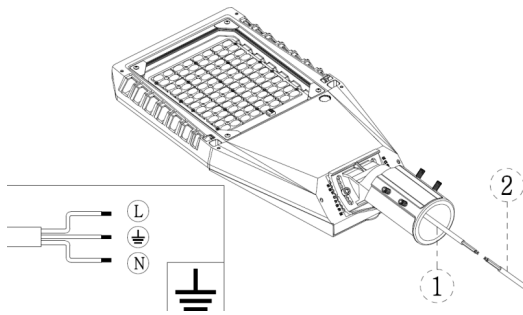
**Light Distributions:**



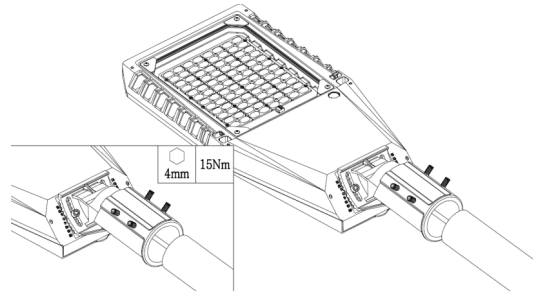
Note: The pictures are only the references of typical light distribution type, and the specific parameters shall be subject to the actual IES of the product.

## Installation Diagram:

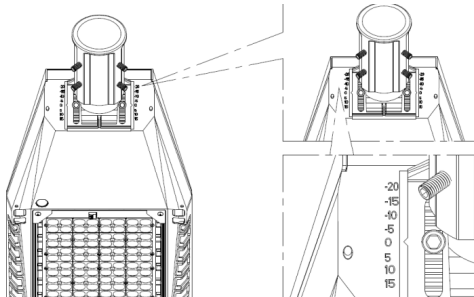
1. Wire the power cables of the luminaire and the pole according to the picture below: L(BRN/BLK) live line, N (BLU/WHT) neutral line, (⊕) (YG/GRN) ground line), making the connection waterproof.



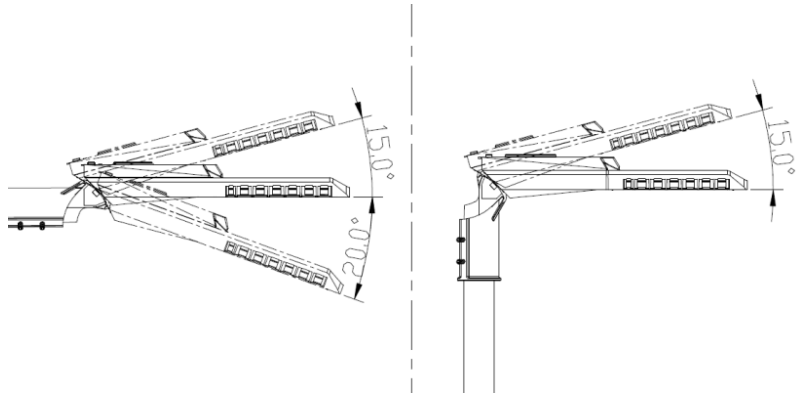
2. Mount the luminaire onto the light pole with M8 screws.



3. Loosen the screws to adjust the spigot and luminaire angle if necessary.



4. Horizontal and vertical installation are optional and the minimum angle adjustment is 5°



## Maintenance:

- Keep the luminaire in clean and good maintenance to ensure long lifespan and safety use.
- Wipe the luminaire with soft cloth dipped with soapy water (squeeze the water out first), and then make it clean and dry with a new cloth;
- Do not use volatile chemical liquids such as gasoline, alcohol or insecticides to clean the luminaire, otherwise damage occurs.

## Cautions:

- Make sure safe and complete installation before power on;
- Do not mount the luminaire onto ordinary combustible materials directly in any circumstances;



- Do not cover the luminaire with any objects;
- Do not use the product in a closed environment;
- The maintenance of the luminaire must be done by professionals;
- The external wiring of the luminaire is X-shaped. If damaged, shall be replaced with wires provided by the original manufacturer or its service team;
- The light source, if damaged, shall be replaced with chips provided by the manufacturer or service team.

**Warning, danger of electric shock**



- Statement: The luminaire complies with the non-hazardous requirements in the photobiological safety standard IEC 62471:2006;
- Product specifications are subject to change without notice.